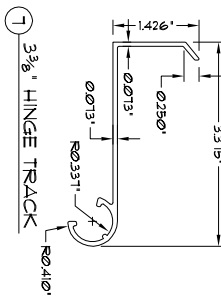
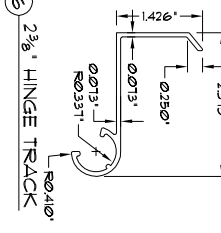
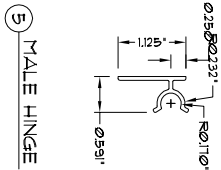
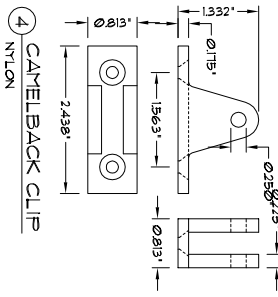
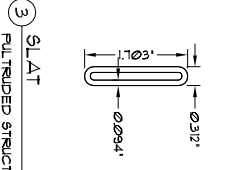
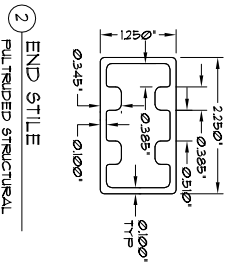


SHUTTERS APPROVED TO MAX DESIGN SIZE OF 103'H x 60'W AND MAX DESIGN PRESSURE OF ±5.5psf. SHUTTERS TESTED TO LEVEL 'D' LARGE MISSILE IMPACT TEST (REF ASTM E1996 6.2)



GENERAL NOTES

- THIS BAHAMA SHUTTER SYSTEM HAS BEEN DESIGNED IN ACCORDANCE WITH THE 2001 FLORIDA BUILDING CODE & THE 2000 INTERNATIONAL BUILDING CODE.
- POSITIVE & NEGATIVE DESIGN PRESSURE CALCULATIONS SHALL BE PERFORMED BY OTHERS FOR SPECIFIC JOBS IN ACCORDANCE WITH ASCE 1-98 OR PER GOVERNING CODE. SHUTTERS MUST BE DESIGNED TO THESE PRESSURES PER SCHEDULES HEREIN. HEIGHTS TO BE USED UNLESS PRESSURES EXCEED 150 PSF POSITIVE OR NEGATIVE.
- THIS BAHAMA SHUTTER SYSTEM HAS BEEN DESIGNED TO WITHSTAND 15 MPH WINDS IN THE OPEN POSITION (150 PSF MAX WINDLOAD) BASED ON ASCE 1-98 EXPOSURE 'C', AND SHALL BE LOCKED IN THE CLOSED POSITION WHEN WINDS EXCEED 15 MPH.
- NO 4/3 ALLOWABLE UNLOAD STRESS INCREASE HAS BEEN USED IN THE DESIGN OF THIS SYSTEM. USE OF DIRECTIONALITY FACTOR Kd=0.85 IS ALLOWED FOR USE WHEN CALCULATING PRESSURES PER ASCE 1-98.
- SHUTTER PANELS HAVE BEEN DESIGNED & TESTED TO THE MAXIMUM SPANS AND LOADS SHOWN ON THESE DRAWINGS. REFERENCE CONSTRUCTION TESTING CORPORATION LABORATORY TEST REPORT NO. 02-042.
- SHUTTER PANELS SHALL BE PER DETAILS HEREIN. ALL EXTRUSIONS TO BE 6063-T6 ALUMINUM ALLOY, UNO. FILTREADED STRUCTURAL FIBERGLASS TO HAVE YIELD STRESS OF 300ksi.
- ALL BOLTS & WASHERS SHALL BE ZINC COATED, GALVANIZED OR STAINLESS STEEL WITH A MINIMUM TENSILE STRENGTH OF 60 ksi.
- ANCHORS SHALL BE INSTALLED IN ACCORDANCE WITH MANUFACTURERS' RECOMMENDATIONS. EMBEDMENT LENGTHS SHALL BE AS NOTED & DO NOT INCLUDE STUCCO OR OTHER EXTERIOR WALL FINISHERS.
- PERMIT HOLDER SHALL VERIFY THE ADEQUACY OF THE EXISTING STRUCTURE TO WITHSTAND NEW IMPOSED LOADS.
- EXCEPT AS EXPRESSLY REQUIRED IN THIS SPECIFICATION NO ADDITIONAL CERTIFICATIONS OR APPROVALS ARE INTENDED.
- ALTERATIONS, ADDITIONS, HIGHLIGHTING OR OTHER MARKINGS TO THIS DOCUMENT ARE NOT PERMITTED AND INVALIDATE OUR CERTIFICATION.

REVISIONS	DATE

Atlantic Shutter Systems
 3239 HWY 301 NORTH
 LATTA, SC 29565
 LOUVERED BAHAMA SHUTTER

FL EDITION
 FRANK L. BENNARDO P.E.
 CONSULTING ENGINEER
 4441 NORTH DIXIE HIGHWAY
 BOCA RATON, FL 33431
 (561) 391-2888 FAX: (561) 391-2862
 WWW.FLBENGINEERING.COM
 EMAIL: FRANK@FLBENGINEERING.COM

THIS DOCUMENT IS THE PROPERTY OF ATLANTIC SHUTTER SYSTEMS. IT IS TO BE USED ONLY FOR THE PROJECT AND LOCATION SPECIFICALLY IDENTIFIED HEREIN. NO REPRODUCTION OR TRANSMISSION IN ANY FORM OR BY ANY MEANS, ELECTRONIC OR MECHANICAL, INCLUDING PHOTOCOPYING, RECORDING, OR BY ANY INFORMATION STORAGE AND RETRIEVAL SYSTEM, IS PERMITTED WITHOUT THE WRITTEN PERMISSION OF ATLANTIC SHUTTER SYSTEMS. (REV. 05/15/05)

